

LODGE



Fisherman's hut

The Cabane du Pêcheur or Fisherman's hut is a lodge with a spacious living area and covered terrace. Its old wood cladding and shingled roof give it a unique charm that's perfect for a change of scenery.

USES

- ◆ Permanent or leisure accommodation
- ◆ Detached extension
- ◆ Second home
- ◆ Atypical top-of-the-range rental accommodation

AVANTAGES

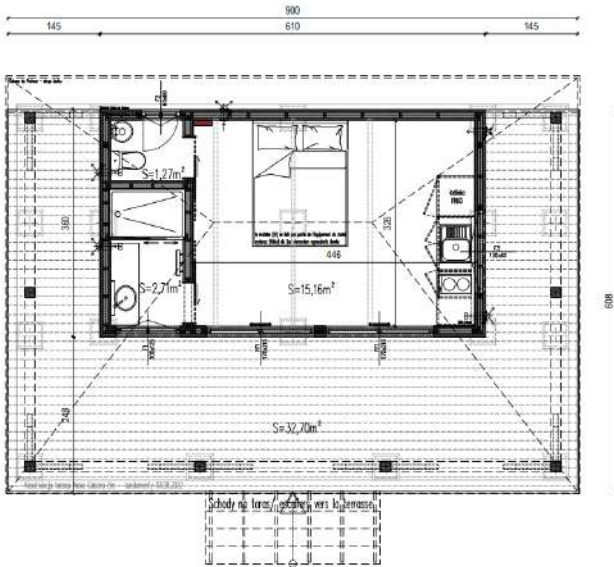
- ◆ Ecological, economical and sustainable housing
- ◆ Foundation-free
- ◆ 4-season insulation
- ◆ Delivered assembled
- ◆ Autonomy optional



LODGE

The Fisherman's hut is a superb 19.14 m² lodge that can be built on stilts. With its windows and large terrace, it offers a most pleasant setting with an uninterrupted view of its surroundings.

DETAILS



- ◆ Old recycled wood cladding
- ◆ Thermo-lacquered aluminium joineries, double-glazed
- ◆ Wood shingle 4-slope roof
- ◆ Wooden framework
- ◆ Wood and mineral wool insulation
- ◆ Waterproofing with rain screen and vapour barrier
- ◆ Complete electrical and water installations
- ◆ Fully-equipped bathroom and kitchen
- ◆ Choice of interior and exterior finishes
- ◆ Delivery in 3 months

LODGE LENGTH	6,10 m
LODGE WIDTH	3,60 m
HEIGHT	3,29 m
APERTURES	5

GROUND AREA EXCLUDING TERRACE	22 m ²
LIVING AREA	19,14 m ²
TERRACE	32,70 m ²



Non-contractual photos

00 334 65 68 09 17

info@quadrapol.com



www.quadrapol.com