

TINY HOUSE



TINY HOUSE MONTANA

Montana is a 23.44 m² Tiny House with a stylish design. Perfectly optimised, it has two mezzanines that can sleep up to 4 people. Its covered entrance gives it style and practicality.

USES

- ◆ Main home
- ◆ Detached extension
- ◆ Second home
- ◆ Charming rental

AVANTAGES

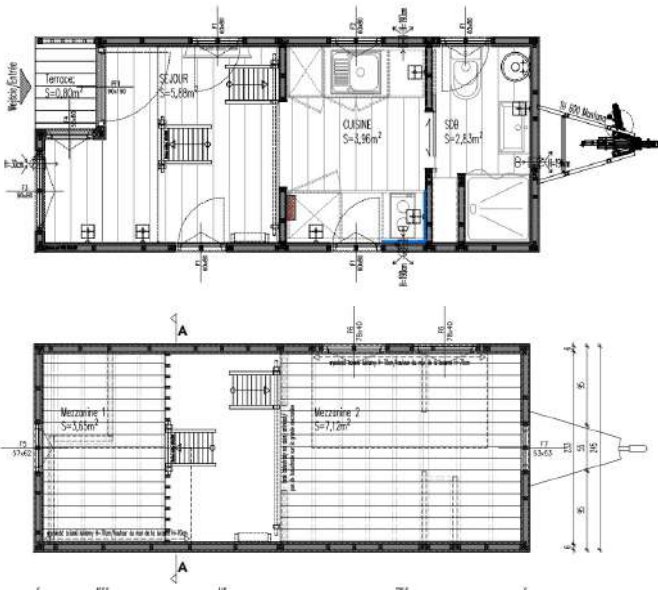
- ◆ Ecological, economical and sustainable housing
- ◆ Without building permit
- ◆ 4-season insulation
- ◆ Delivered assembled
- ◆ Optional autonomy



TINY HOUSE

Montana is very light thanks to its many windows. It has a kitchen opening onto the living room and a functional entrance hall, with a covered terrace.

DETAILS



- ◆ Braked trailer in galvanised steel, EC approved
- ◆ Natural larch wood cladding
- ◆ Thermo-lacquered aluminium joineries, double glazing
- ◆ Steel decks roof
- ◆ Wooden framework
- ◆ Wood and mineral wool insulation
- ◆ Waterproofing with rain screen and vapour barrier
- ◆ Complete electrical and hydraulic systems
- ◆ Fully-equipped bathroom and kitchen
- ◆ Choice of interior and exterior finishes
- ◆ Delivery in 3 months

LENGTH	6,07 m
WIDTH	2,50 m
HEIGHT	4 m
ALUMINIUM JOINERIES	12

GROUND FLOOR	12,67 m ²
MEZZANINES	10,77 m ²
TERRACE	0,80 m ²



Non-contractual photos

00 334 65 68 09 17
info@quadrapol.com



www.quadrapol.com